

## Flightlog SP1 Installation Instructions

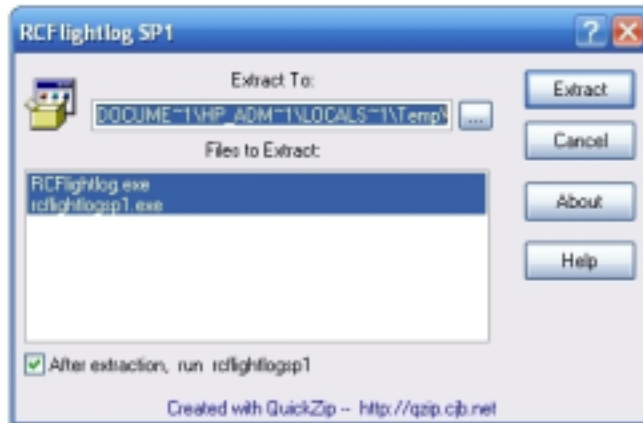
This update will replace the Application program but will not alter any of your current data.

The update is shipped as a self-extracting/self-installing exe “rcflogsp1.exe”

### To install:

Download the file (to your desktop recommended)

Double click on the file and the following Qzip panel will open.



Click on “Extract” and the files will be extracted to temporary storage and the following install panel will display



Note: The application path will default to “C:\program files\rcflightlog” which is where the application was installed if you did not change it. If you changed it, you will need to enter the correct path information.

Click on “Start Update” and the installation will complete.

The center pane, displaying progress, should end with “... End of update process ...”

Good luck—Al