

The R/C Flightlog

Users Guide

Version 1.1 11/17/2005

Software for the recording of R/C Model flight and operational costs

*Copyright 2003 - 2005 Helibase Software
<http://www.rchelibase.com/software/rcflightlog.pdf>
coelho@rchelibase.com*

The R/C Flightlog program

Use of program:

The program was written, and is maintained, by Al Coelho (coelho@rchelibase.com). The application is offered free of charge for private use. Further distribution or modification is not allowed.

The program requires Windows 98 or later and is written in Visual Basic. The distribution disk was created using the Visual Basic distribution wizard. Installation uses the standard Windows setup procedure which will list the program in the Windows control panel under the add/delete programs for later removal.

The distributed software has been scanned for virus, and uses standard Visual Basic and Windows support. It is to be understood however, that the owner will not be held responsible for any resultant problems caused by its installation. The program is distributed on a "Use at your own discretion".

With that said lets get on.....

INSTALLATION

The program is compressed into a zip file and will require unzipping for use. Download the distribution file (rflightlog.zip) to a folder on your system. (A new folder on your desktop is suggested)

After the download completes, open the folder and double click on the file "rcflightlog.zip". This should start your unzip program. Extract the files into the folder you created.

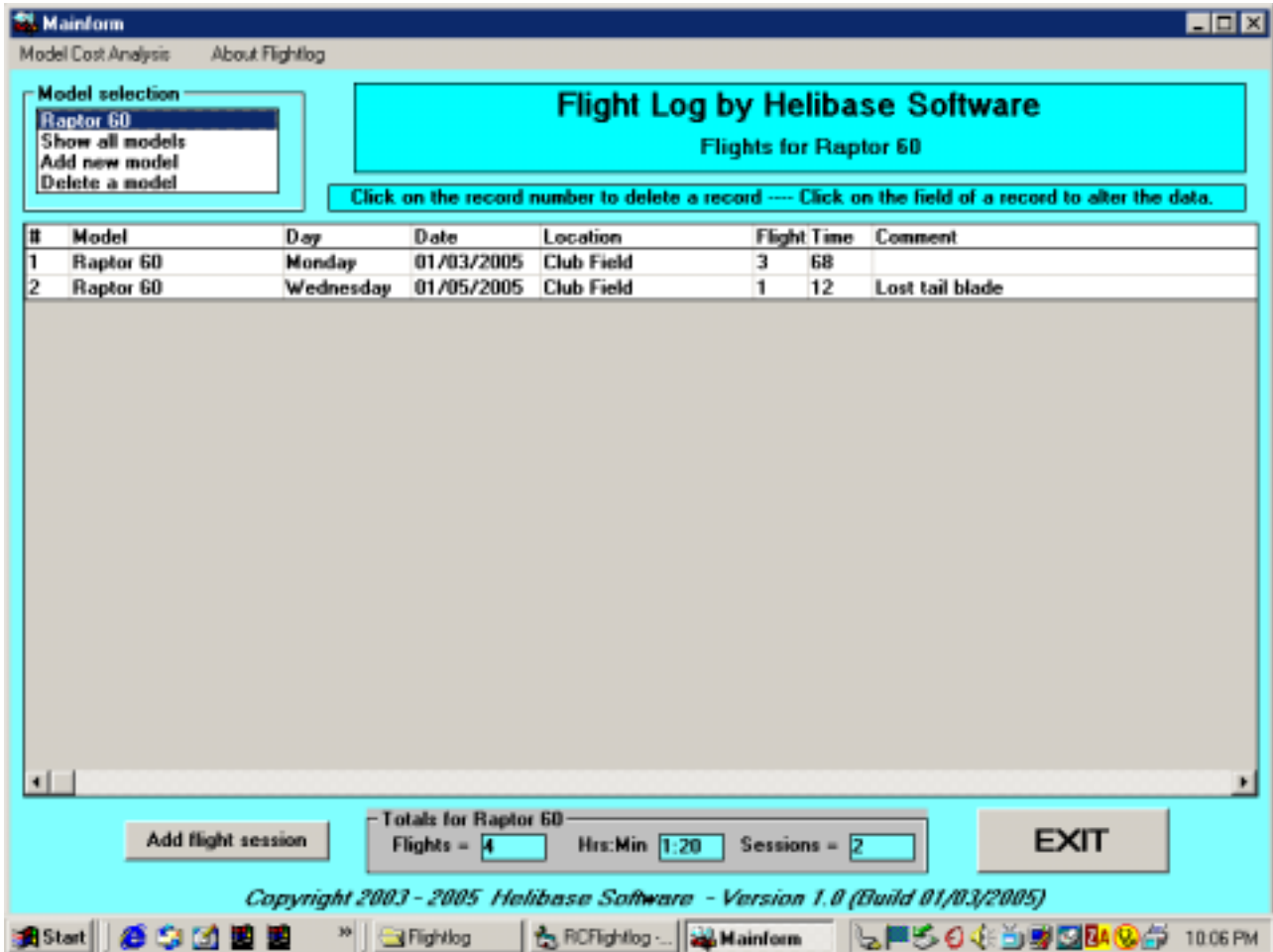
Once extraction is complete, return to the folder and click on the file "Setup.exe". The windows setup program will then start and install the application. The application will be installed under windows program files in a directory called rflightlog, unless otherwise specified.

Once the program installation is complete, the program it is ready to use. The ICON (Red biplane) will appear under your windows "Programs" listing. A shortcut may be installed on your desktop as desired.

Once installed, the downloaded distribution file and the extracted files can be deleted.

To begin using the program, Select "add new model" from the "Model selection" box on the main screen. You may then add flight sessions or costs against that model as desired. Refer to the remainder of this users guide for further assistance.

Good luck - Al



Main Screen

The main screen will be displayed on startup. To display the flight data for a model, click on the model's name in the "Model Selection" box. The records for all models may be shown by selecting "Show all models". The flight data for the selected model will then appear with the total flights, time, and sessions being shown in the summary box at the bottom of the screen.

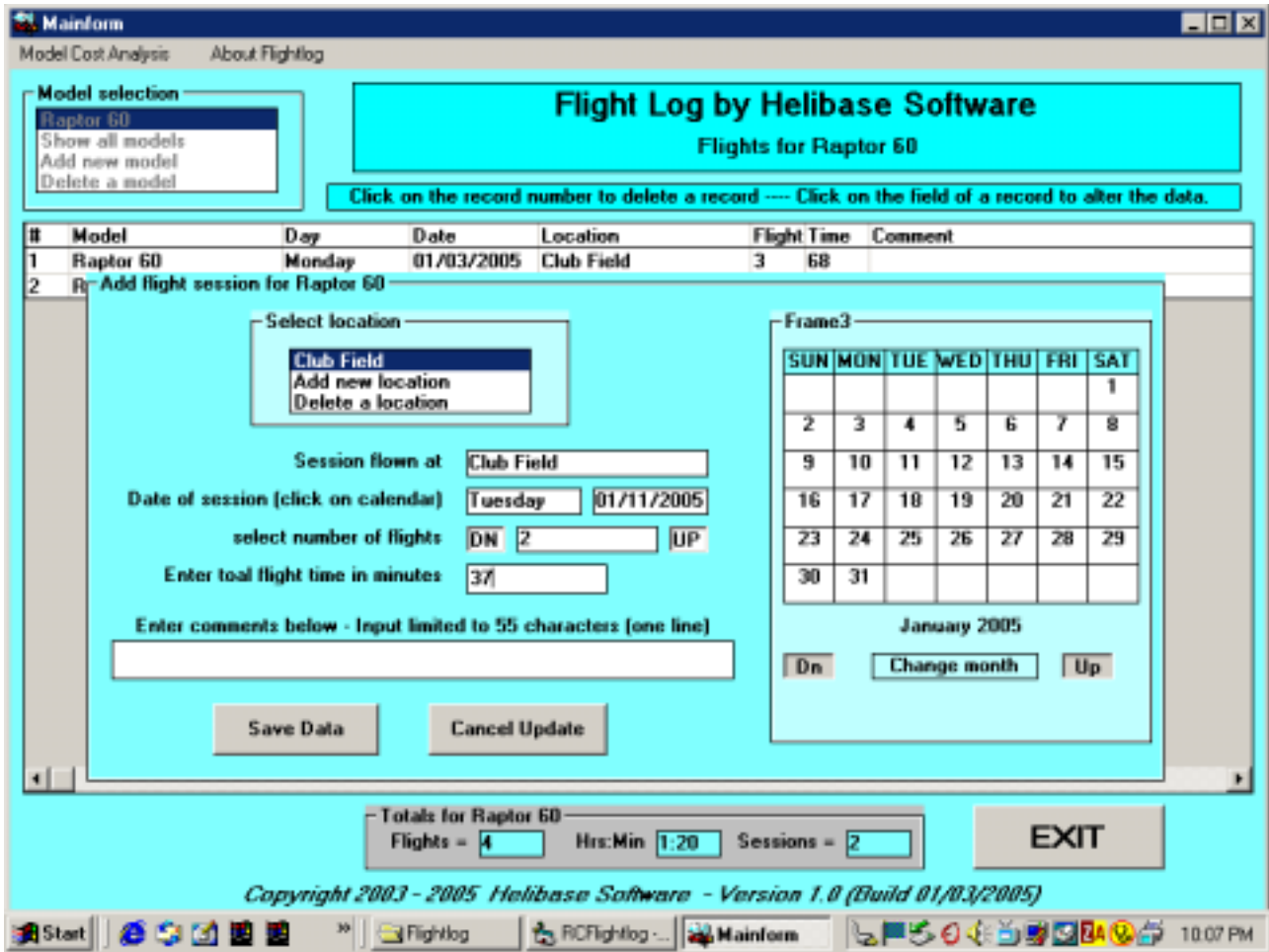
To enter a new flight session, click on the "Add flight session" control (Bottom left). This will take you to the Add Flight screen (See "Flight session entry" later in document). A model must be selected for the "Add flight session" command to be visible.

Current flight data may be altered by clicking on the field of the record you want to alter. A flight session may be deleted by clicking on the record number.

The data may be moved to another model by clicking on the model name.

You cannot delete a model which has flight or cost data recorded against it. You must either delete the entries or move them to another model.

You cannot rename a model but you can create a new model, move the entries to the new model, and then delete the old model.



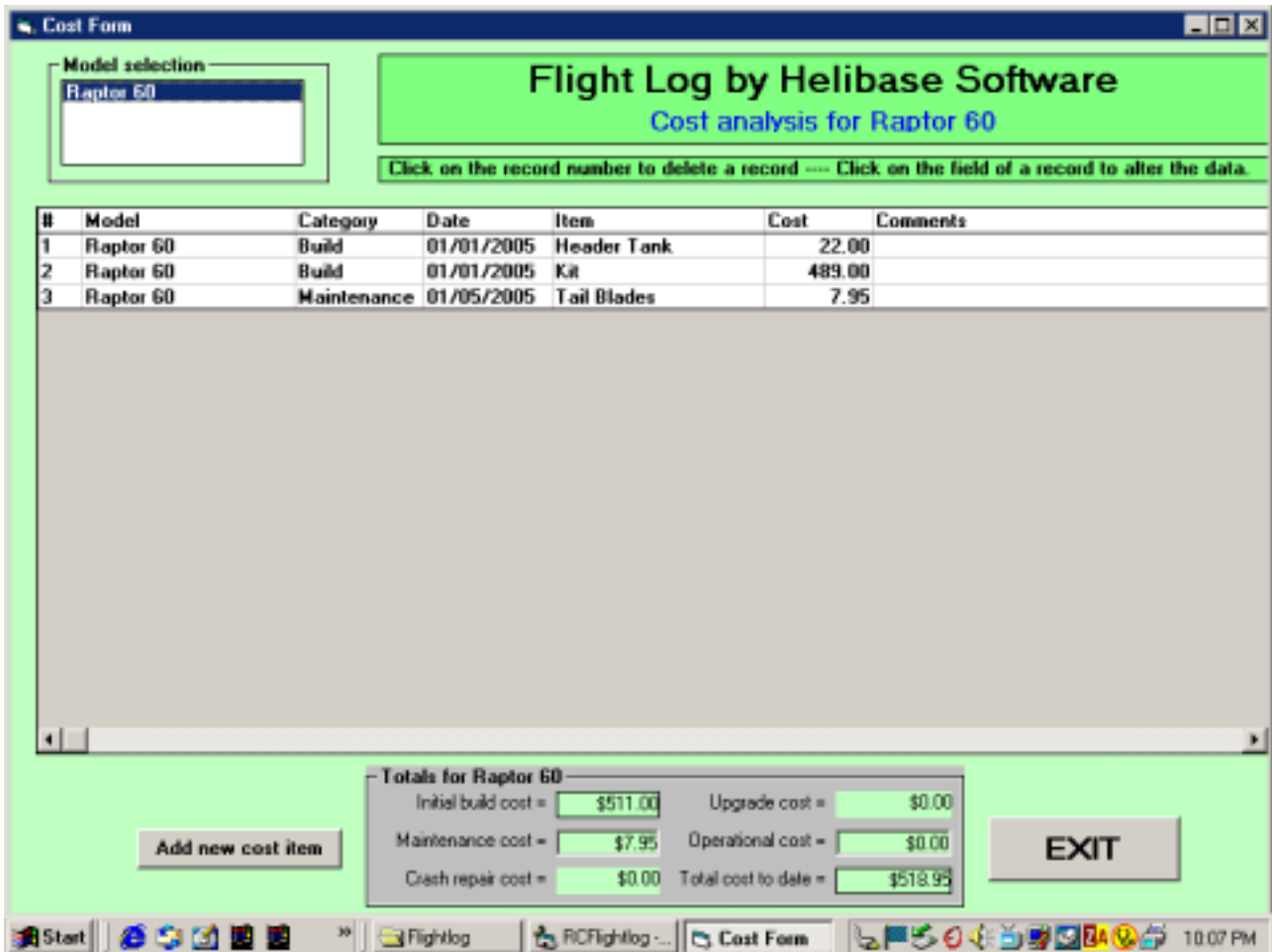
Flight session entry

The flight session entry screen is an overlay on the main screen and is displayed when the “Add flight session” command button is selected. To enter a new flight session:

- Select the flying location from the “Location Selection” box.
- Select the date by clicking on the calendar box.
- Increment the flights to the desired number.
- Enter the total flight time in minutes in the flight time box.
- Add comments as necessary.

Click save data. Cancel will return you to the main screen without saving any data.

Additional flying locations may be added, or existing location deleted, by clicking on the “Add new locations” or “Delete a location” entry in the “Select location” frame.

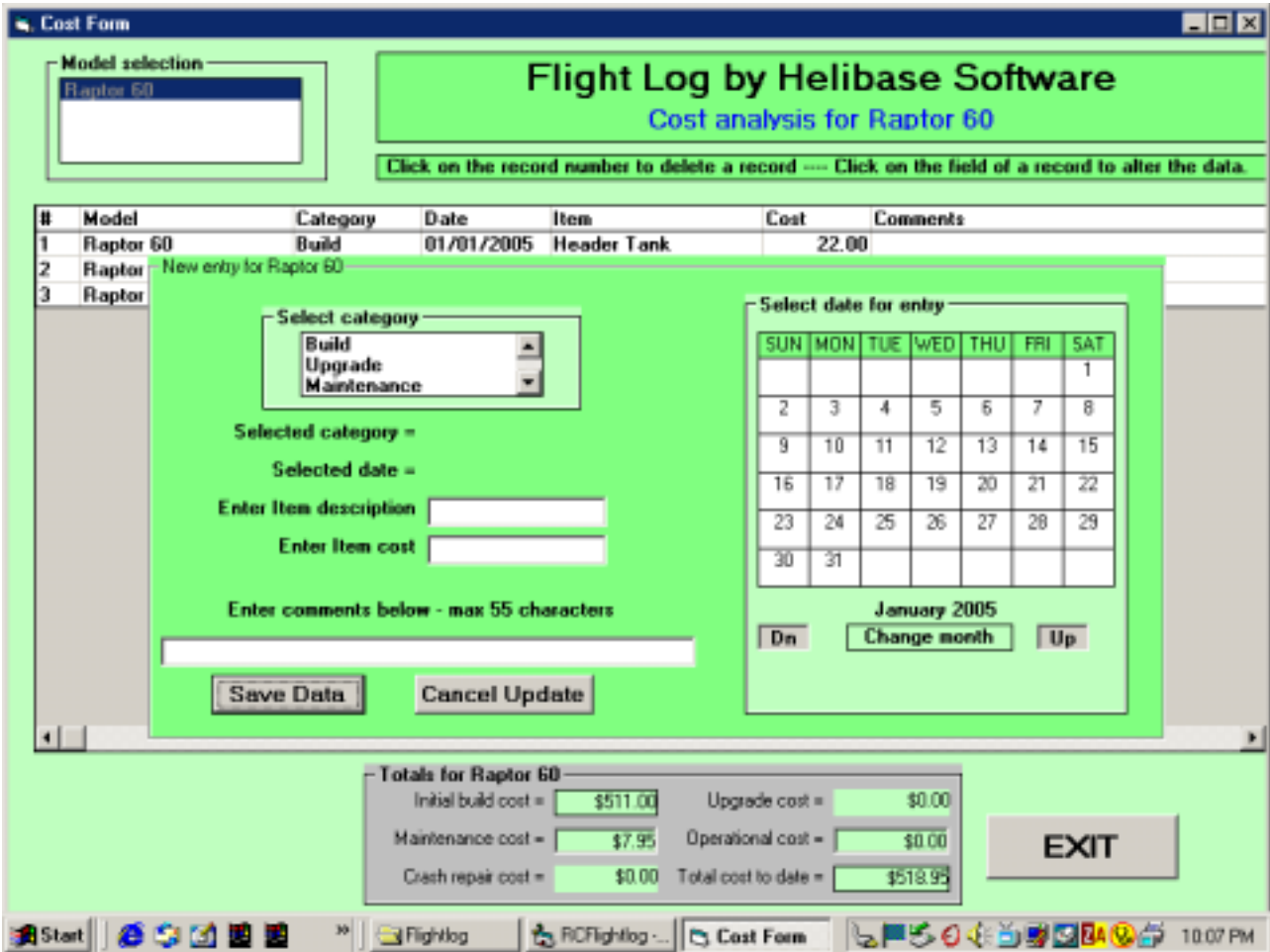


Model Cost form

The model cost form is selected from the menu bar (top left) of the main screen. The screen will display the entries and totals for the model selected.

A new cost item is entered by selecting “Add new cost item” command (Bottom left). A model must be selected for the “Add new cost item” to be visible.

To alter current data click on the field of the record. To delete a record click on the record number.



Add Cost Item

To add a cost item

Select the category from the selection box.

Select the date from the calendar.

Enter the item description.

Enter the item cost.

Enter a comment if desired.

Click on save data.

There are 5 predefined categories. The following are suggested uses.

Build - Costs associated with the initial build of the model.

Upgrade - Non crash costs associated with upgrading the model after the initial build.

Maintenance - Non crash costs items like bearings and etc required to Maintain the model.

Operation - Non crash costs like plugs, fuel and etc.

Repair - Cost to repair a mishap.

To tie a repair action with a flight session I suggest you use the date of the flight session on all repair entries. The mishap (crash) would usually be recorded in the comment section of a given session.