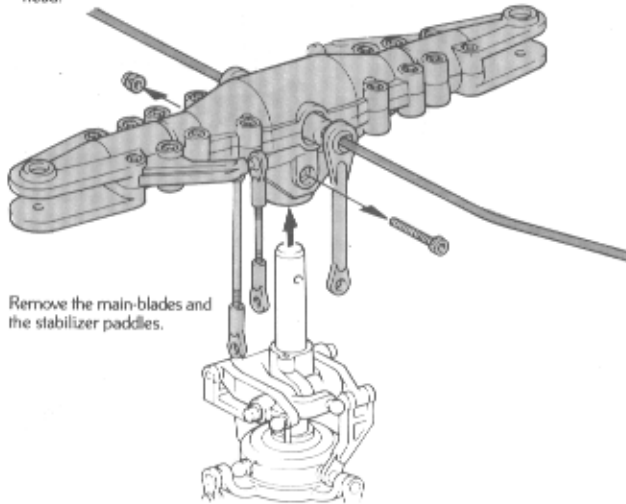


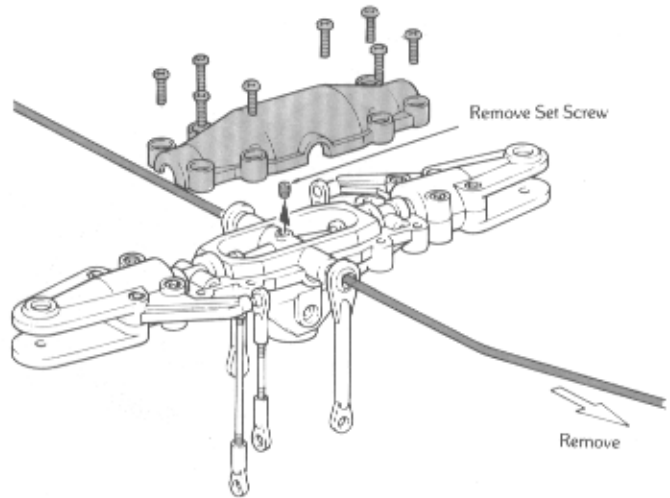
PARTS REPLACEMENT

REPLACEMENT OF THE STABILIZER BAR (FLYBAR)

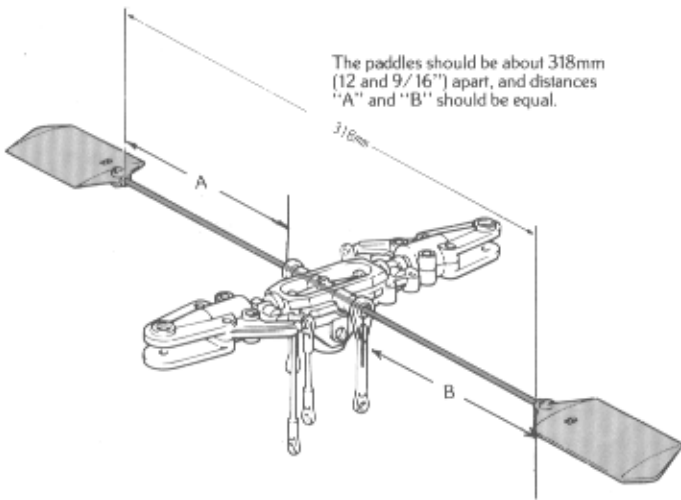
- 1 Disconnect the linkages and remove the rotor head.



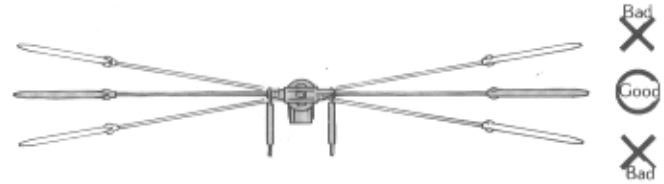
- 2 First remove the top cover and then the set screw. Next, pull the bar out.



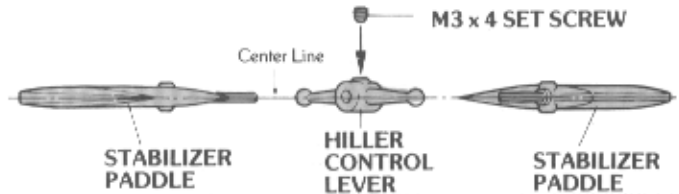
- 3 Insert the new stabilizer bar and reinstall the stabilizer paddles.



- 4 Slide the bar so that the head is balanced.

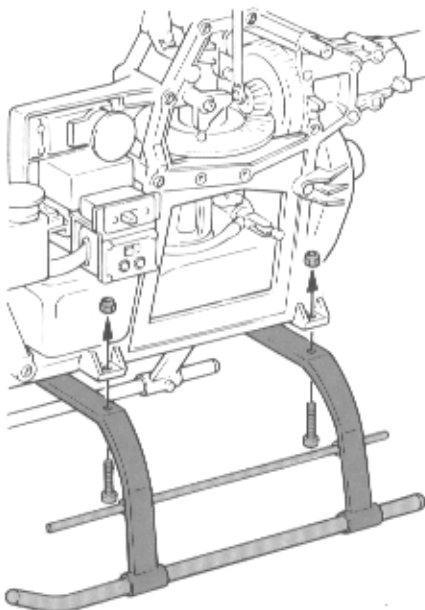


Tighten the Set Screw

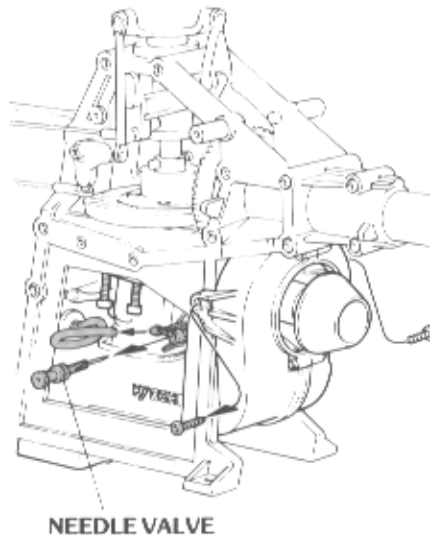


REMOVING THE ENGINE (INSTALL IN THE REVERSE ORDER)

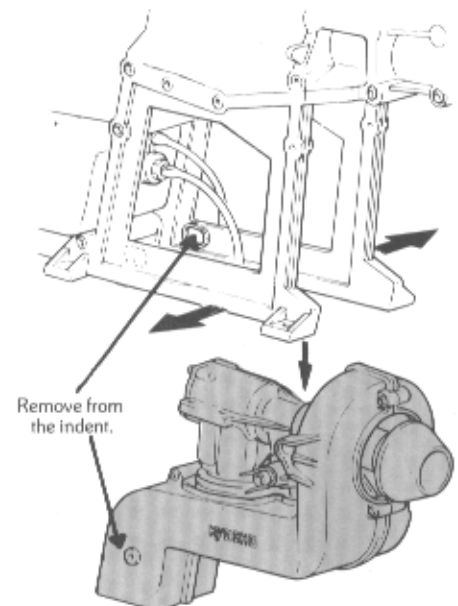
- 1 Remove the landing skids.



- 2 Next, remove the muffler, fuel line, linkage rod, and the needle valve. Then remove the engine mounting and shroud screws.

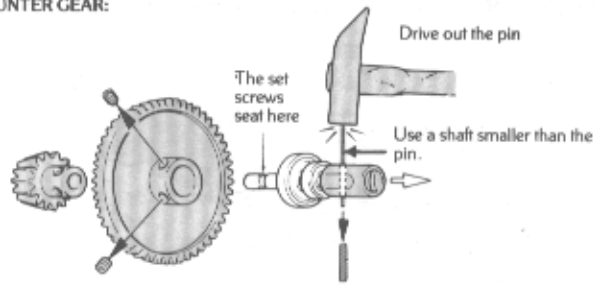
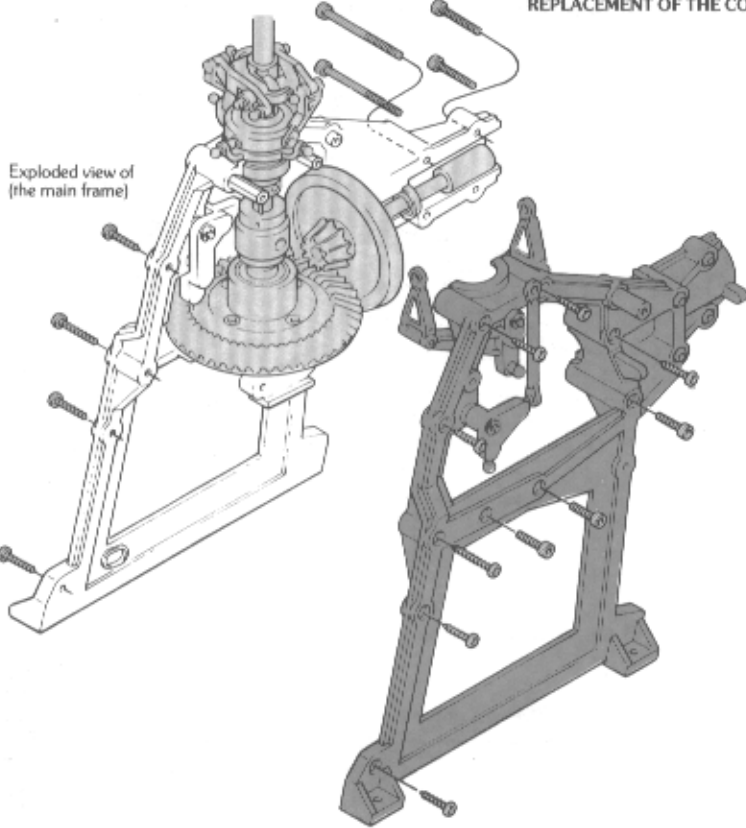


- 3 Spread the lower frame outward, lower the engine together with the fan shroud.

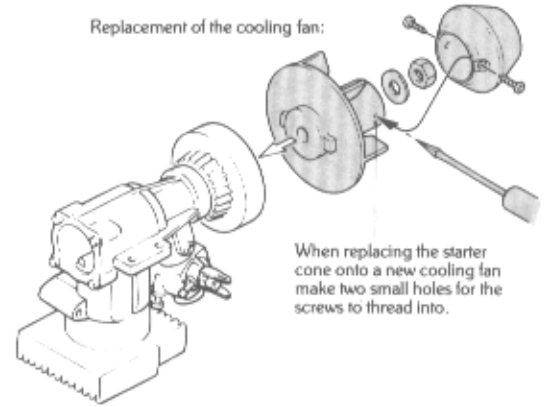


PARTS REPLACEMENT (CONT'D)

REPLACEMENT OF THE COUNTER GEAR:

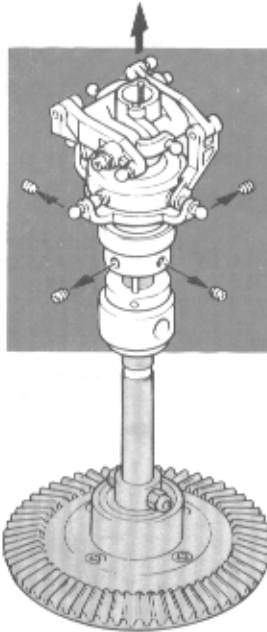


Replacement of the cooling fan:

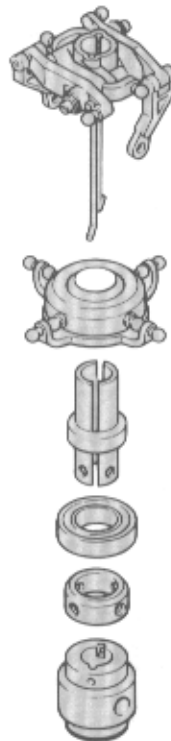


DISASSEMBLING THE SWASHPLATE

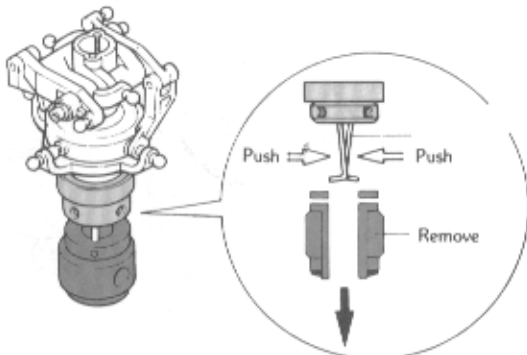
- 1 Remove the 4 set screws and pull the assembly off the mast.



Disassembled Parts

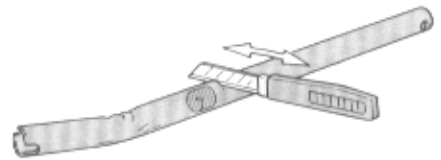


- 2 Push in the wire rods and remove the parts as shown.

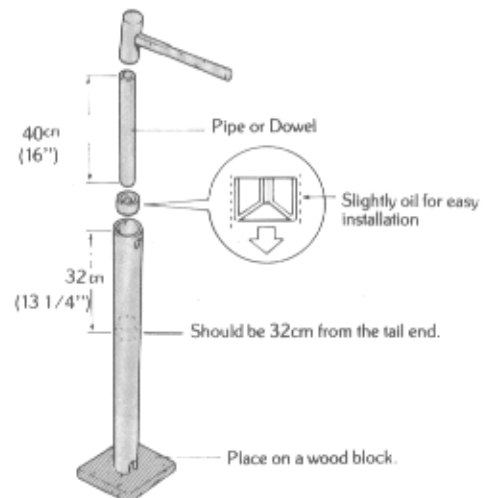


REPLACEMENT OF THE DRIVE SHAFT GUIDE.

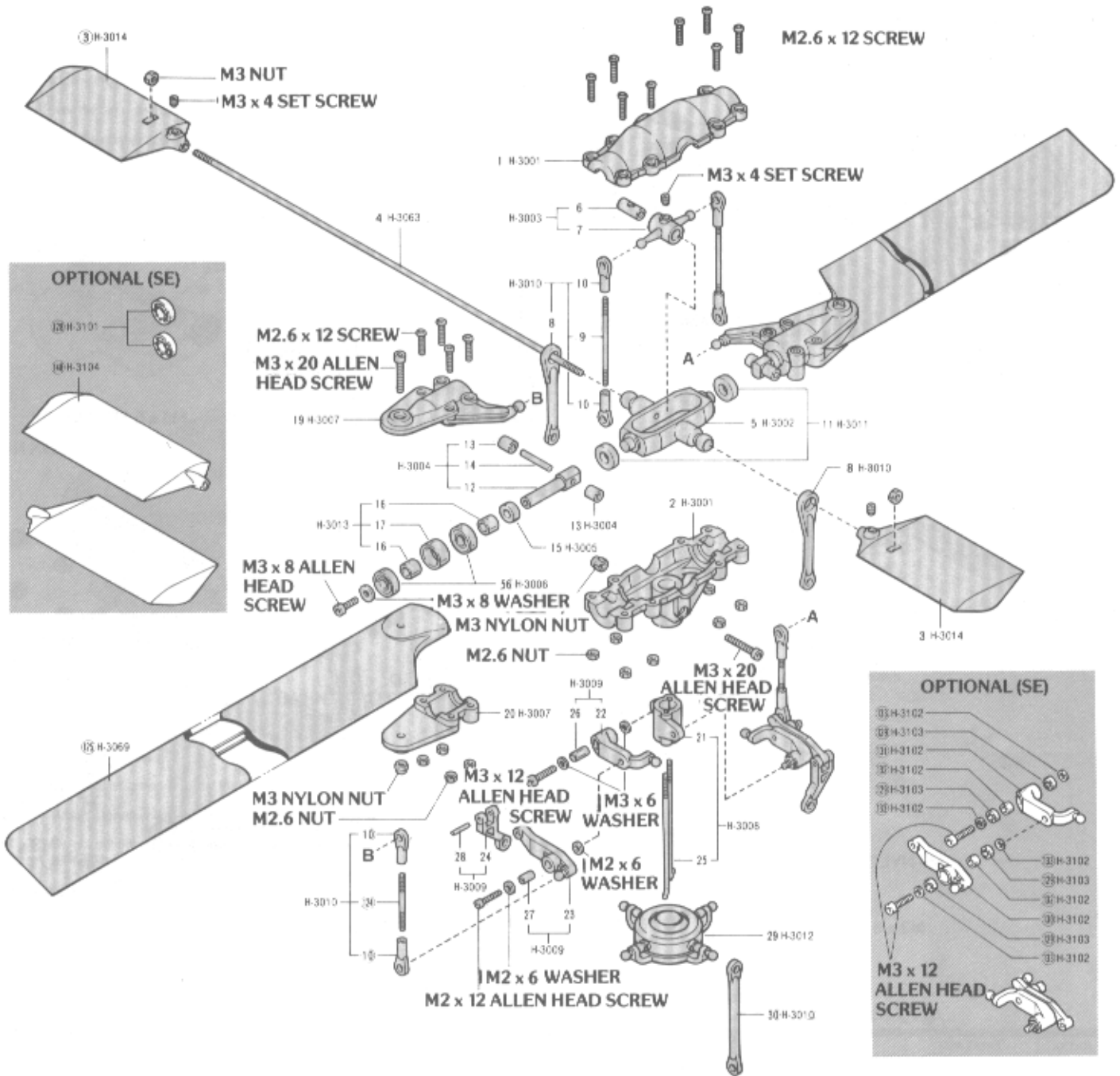
- 1 Cut the boom on both sides of the guide and then carefully tap it out with a hammer and dowel rod (or pipe).



- 2 To insert, drive the guide in its proper direction using a short pipe or dowel.



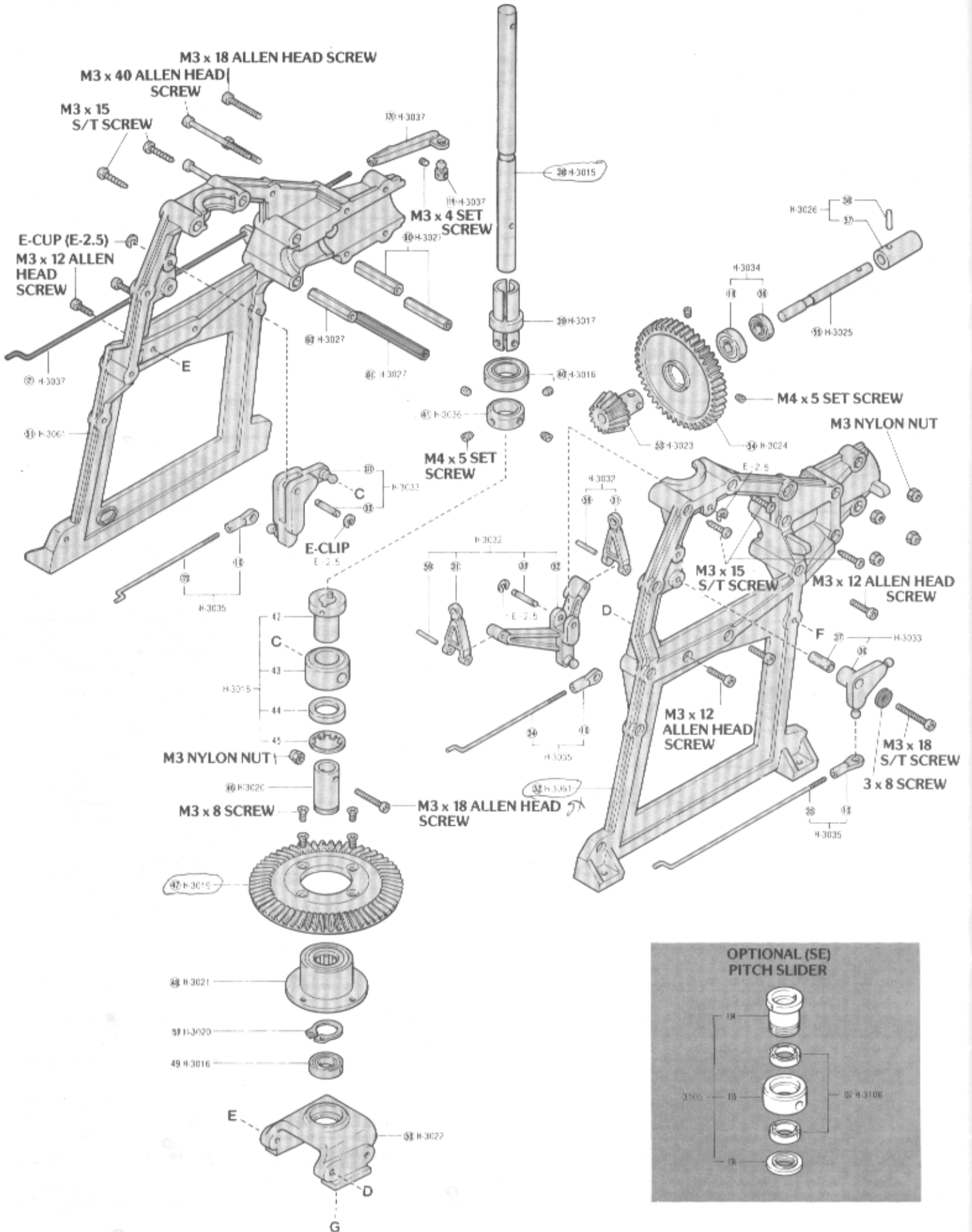
EXPLODED PARTS DIAGRAM



STOCK#	PARTS PACK	DESCRIPTION	CONTAINS	RETAIL
KYOE1010	H-3001	Main Rotor Head	1 2 x 1	8.95
KYOE1020	H-3002	Stabilizer See-Saw	1 x 1	7.95
KYOE1030	H-3003	Hiller Control Lever Set	1 7 x 1	7.95
KYOE1040	H-3004	Feathering Shaft Set	12 14 x 2 13 x 4	14.95
KYOE1050	H-3005	Flapping Damper	13 x 10	6.95
KYOE1060	H-3006	Blade Grip Bearing	11 x 2	12.95
KYOE1070	H-3007	Main Rotor Grip	19 11 x 2	8.95
KYOE1080	H-3008	Mixing Base	11 x 1 15 x 2	7.95
KYOE1090	H-3009	Mixing Lever Set (DX)	12 11 14 16 17 18 x 2	11.95
KYOE1100	H-3010	Linkage Set (A)	10 x 1 (8) 13 (8) x 2 (13) x 4	11.95
KYOE1110	H-3011	Sub. Seesaw Bushing (DX)	11 x 2	4.95

STOCK #	PARTS PACK	DESCRIPTION	CONTAINS	RETAIL
KYOE1120	H-3012	Swash Plate Assembly	11 x 1	34.95
KYOE1130	H-3013	Grip Spacer Set	17 x 2 14 x 4	8.95
KYOE1140	H-3014	Stabilizer Paddles	3 x 2	19.95
KYOE1150	H-3063	Stabilizer Bar	4 x 2	9.95
KYOE1160	H-3069	Main Rotor Blade	11 x 2	35.95
KYOE1300	H-3101	Stab. Seesaw Bearing (SE)	11 x 2	13.95
KYOE1310	H-3102	Mixing Lever Set (SE)	14 11 x 1 x 2 14 x 4 14 x 6	15.95
KYOE1320	H-3103	Mixing Lever Bearing (SE)	11 x 4	24.95
KYOE1330	H-3104	Stabilizer Paddle (SE)	11 x 2	12.95

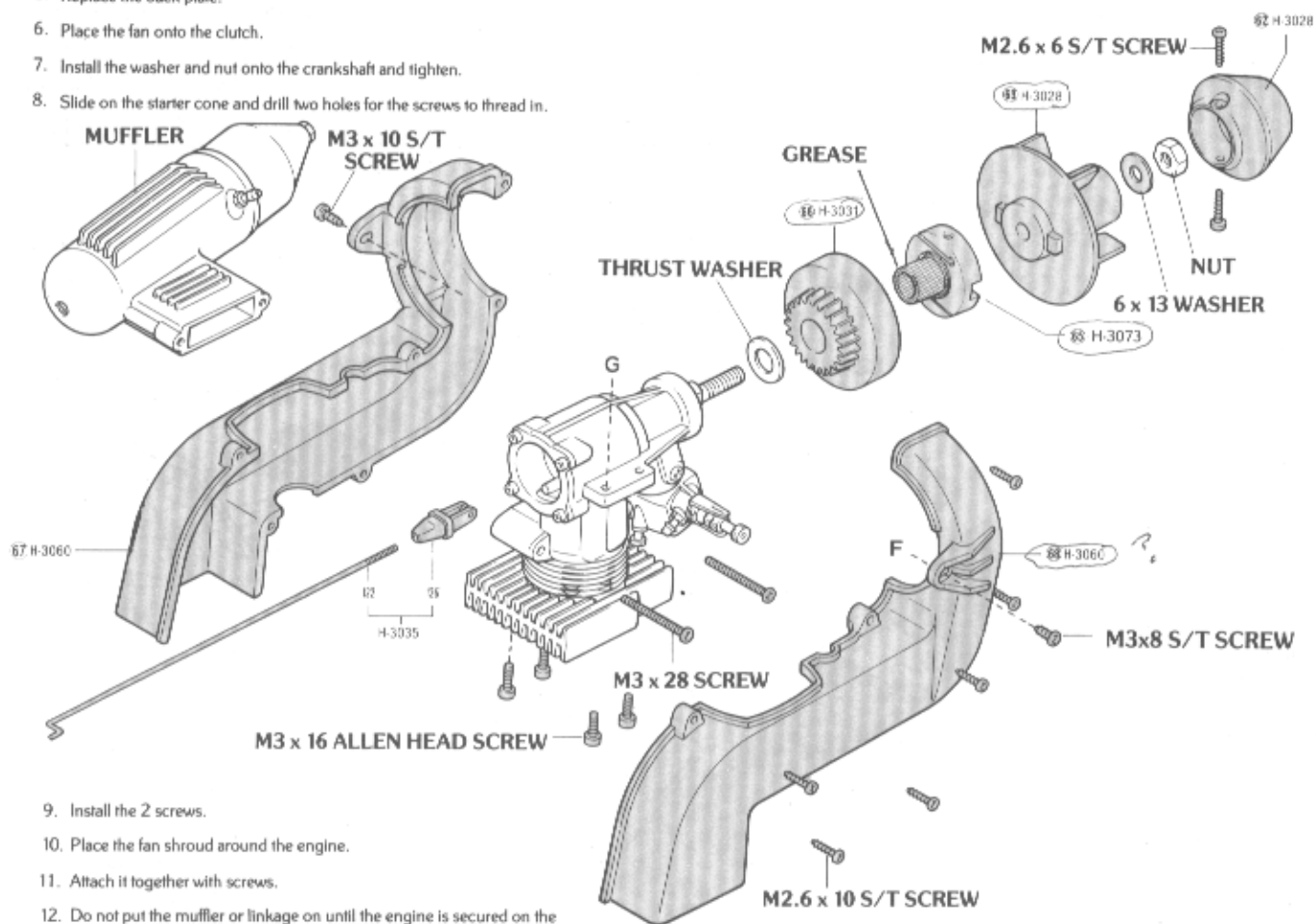
EXPLODED PARTS DIAGRAM



EXPLODED PARTS DIAGRAM

ENGINE INSTALLATION:

1. Remove the engines back plate.
2. Put the thrust washer and drive gear onto the crankshaft.
3. Grease the bearing surface of the clutch liberally. (For trouble free operation, periodically grease the clutch where shown.)
4. Carefully hold the crankshaft from turning and screw on the clutch.
5. Replace the back plate.
6. Place the fan onto the clutch.
7. Install the washer and nut onto the crankshaft and tighten.
8. Slide on the starter cone and drill two holes for the screws to thread in.



9. Install the 2 screws.
10. Place the fan shroud around the engine.
11. Attach it together with screws.
12. Do not put the muffler or linkage on until the engine is secured on the helicopter.

STOCK#	PARTS PACK	DESCRIPTION	CONTAINS	RETAIL	STOCK#	PARTS PACK	DESCRIPTION	CONTAINS	RETAIL
KYOE2010	H-3015	Main Mast	38 X 1	11.95	KYOE2155	H-3073	One Piece Clutch	85 X 1	\$34.95
KYOE2020	H-3016	Main Mast Bearing	48 49 X 1	15.95	KYOE2170	H-3031	Drive Gear	66 X 1	11.95
KYOE2030	H-3017	Pinch Rod Guide	38 X 1	6.95	KYOE2180	H-3032	Elevator Lever Set	33 33 X 1 31 36 X 2	7.95
KYOE2040	H-3018	Pitch Slider Set (DX)	42 43 44 45 X 1	12.95	KYOE2190	H-3033	Aileron, Pitch Lever Set	33 35 37 38 X 1	7.95
KYOE2050	H-3019	Main Gear	47 X 1	7.95	KYOE2200	H-3034	Secondary Shaft Bearing	18 18 X 1	12.95
KYOE2060	H-3020	One-Way Shaft	45	7.95	KYOE2210	H-3035	Linkage Set (B)	34 35 37 39 X 1 18 X 3	7.95
KYO32070	H-3021	One-Way Housing	48	33.95	KYOE2220	H-3036	Mast Stopper	41 X 1	6.95
KYOE2080	H-3022	Engine Mount	53 X 1	15.95	KYOE2230	H-3037	Rudder Linkage Rod	41 48 49 X 1	7.95
KYOE2090	H-3023	Bevel Pinion Gear	53 X 1	18.95	KYOE2240	H-3060	Fan Shroud	51 68 X 1	8.95
KYOE2100	H-3024	Counter Gear	54 X 1	7.95	KYOE2250	H-3061	Main Frame	51 52 X 1	25.95
KYOE2110	H-3025	Secondary Shaft	55 X 1	7.95					
KYOE2120	H-3026	Tail Drive Coupling	57 58 X 1	5.95					
KYOE2130	H-3027	Threaded Inserts	81 X 1 86 X 3	5.95	KYOE2260	H-3105	Pinch Slider Set (SE)	9 11 12 X 1	20.95
KYOE2140	H-3028	Starter Cone Set	82 83 X 1	11.95	KYOE2270	H-3106	Pitch Slider Bearing (SE)	10 X 2	12.95

EXPLODED PARTS DIAGRAM

STOCK#	PARTS PACK	DESCRIPTION	CONTAINS	RETAIL
KYOE3010	H-3038	Tail Drive Joint	75 × 1	\$7.95
KYOE3020	H-3039	Tail Wing Set	72 73 74 × 1	8.95
KYOE3030	H-3040	Tail Input Gear Bearing	76 × 2	12.95
KYOE3040	H-3041	Tail Gear Set	77 78 × 1	7.95
KYOE3050	H-3042	Tail Gear Case	80 81 × 1	8.95
KYOE3060	H-3043	Tail Output Shaft	79 82 × 1	8.95
KYOE3070	H-3044	Tail Pitch Lever Set	27 84 85 89 × 1 90 × 2	6.95
KYOE3080	H-3045	Tail Slide Ring Set	86 87 91 92 × 1	8.95
KYOE3100	H-3047	Tail Output Shaft Bearing	83 × 2	12.95
KYOE3110	H-3048	Tail Pitch Slide Bearing	88 × 2	12.95

